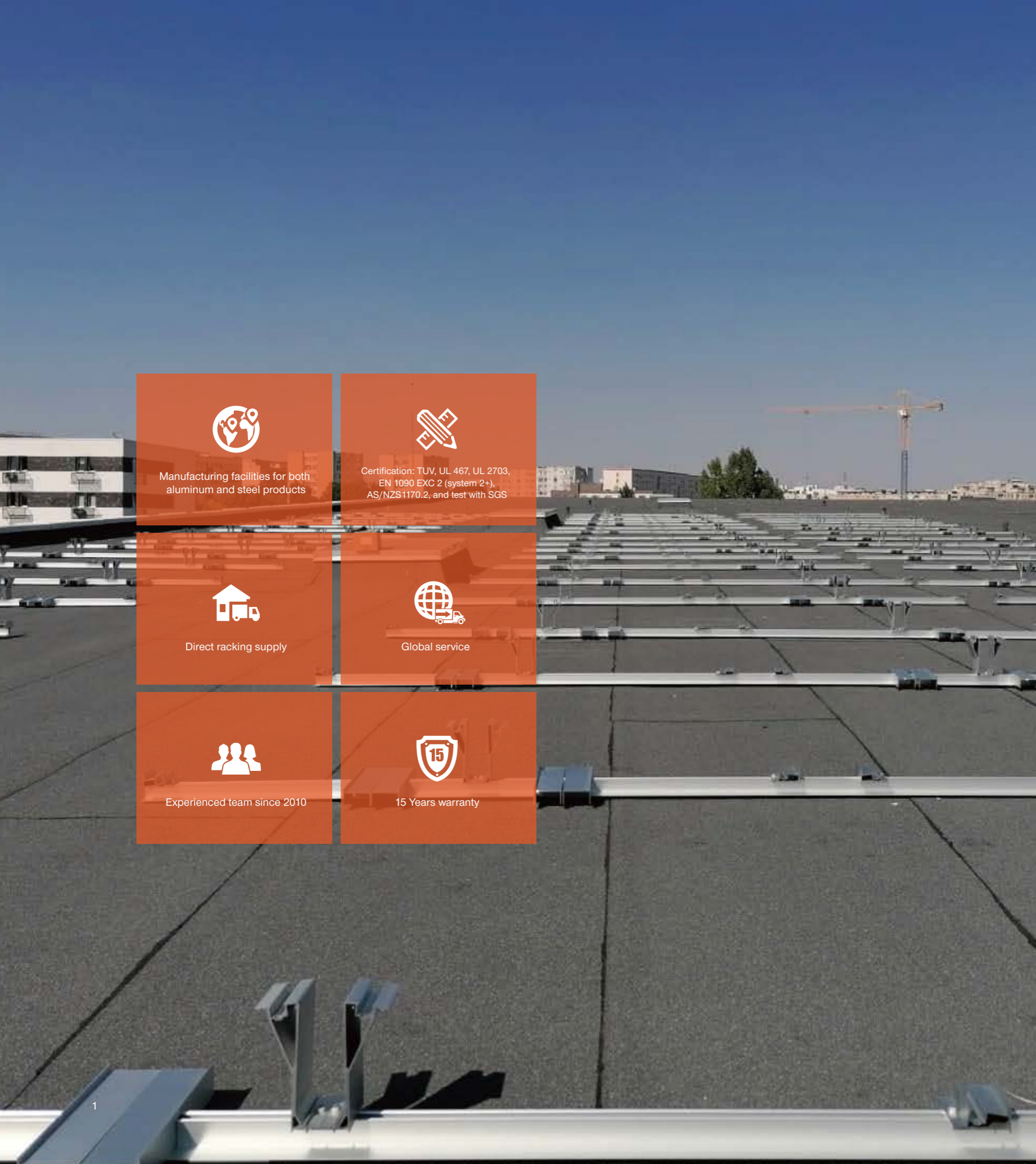


# SOLAR MOUNTING SOLUTIONS

---



Manufacturing facilities for both aluminum and steel products



Certification: TUV, UL 467, UL 2703, EN 1090 EXC 2 (system 2+), AS/NZS1170.2, and test with SGS



Direct racking supply



Global service



Experienced team since 2010



15 Years warranty

# CONTENTS

ABOUT US	05
Certificate	09
Rail & Accessories	15
Metal Roof Attachment	23
Tile Roof Attachment	35
U Plus Series	41
Tilt Mounting	43
Maxi Tripod System	47
Ballasted-PRO Mounting	49
Ballasted-Pro East-West Integrated Rear Leg	51
Ballasted-ULT Mounting	53
Ballasted-Ult East-West Integrated Rear Leg	55
Green Roof Mounting	57
Ground Mounting	59
Solar Fence System	63
Pole Mounting	65
Carport Mounting	67
Waterproof Carport System	69

# GLOBAL EXPERTISE PROVEN PERFORMANCE

From the vast hinterlands of Oceania to the bustling metropolises of Asia, from the innovative frontiers of the Americas to the pioneering rooftops of Europe, and across the sun-scorched plains of Africa—Enerack's products have established their presence across six continents. This worldwide footprint demonstrates that our solutions are rigorously field-proven, confirming not only our ability to meet diverse regional requirements and standards but also driving a highly efficient cycle of innovation and intelligent manufacturing. Building on this foundation, we provide mounting solutions that comply with global standards, adapt to local conditions, and accommodate project-specific needs. Through robust products and seamless collaboration, we have become your trusted global partner.



# ABOUT US

## Enerack: Providing a Stable Foundation and Global Compliance for Your PV Projects

### About Us: A Technology-Driven Solar Mounting Specialist

Xiamen Enerack Technology Co., Ltd. is an innovative solar PV mounting system integration company with 18 years of experience in the industry, headquartered in Xiamen, China. We specialize in the full range of solar mounting system integration, including R&D, design, production, sales, and service. We understand that choosing a solar mounting system is not just about choosing a metal component; it's also about choosing long-term security, reliable returns, and global market compliance. As PV experts, our core goal is clear: to provide optimal support with stability, reliability, and cost-effectiveness for residential, industrial, commercial, government, and large-scale power station projects.

### How We Create Value For You

#### Efficient Delivery & Cost Optimization:

We integrate R&D and manufacturing, with a professional team of over 80 people and a modern production base. This vertical integration model enables us to strictly control costs and delivery times, providing you with cost-effective products and efficient, responsive service.

#### Professional Solutions for Complex Environments:

We offer technical solutions covering all major scenarios and are proficient in designing systems for Metal roofs, Tile roofs, Concrete Flat roofs, Green roofs, Ground mounts, and waterproof carports. With extensive project experience, we can help you solve practical installation challenges.

#### Risk Mitigation & Quality Assurance:

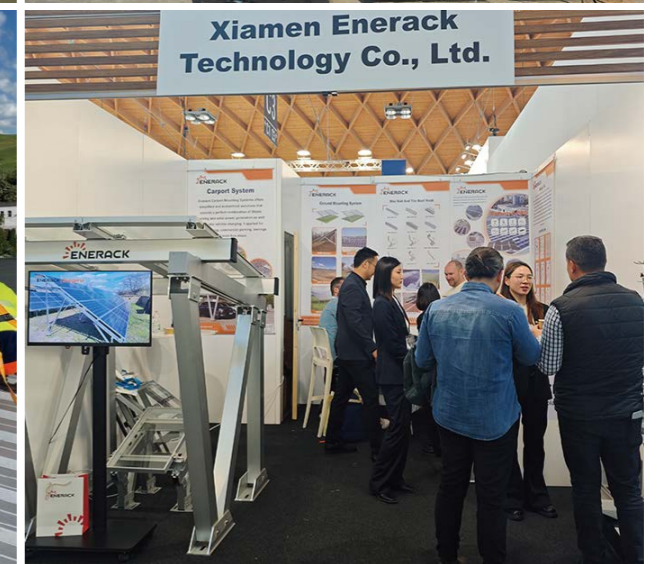
We prioritize quality management through our ISO9001 certification system to eliminate defects. This results in fewer installation issues, lower maintenance costs, and a longer system lifespan, ultimately protecting your investment.

#### Global Compliance: Certification and Standards Are the Bottom Line

International market regulations are complex and ever-changing. We have achieved certifications and standards such as TÜV, UL 467, UL 2703, CE, EN 1090-1:2009+A1:2011, AS/NZS 1170.2, JIS C8955 etc., reducing market entry barriers for you. Our products are tested by organizations like SGS and adhere strictly to these standards from design to production, ensuring easy and compliant installation and certification.

#### Our Vision: Growing Together with You

Enerack's products have been successfully applied in over 80 countries and regions around the world. We are determined to go beyond the role of a supplier and become your strategic partner in expanding into global solar markets. With exceptional products and innovative solutions, we are committed to supporting your business success.





# CERTIFIED FOUNDATION, ASSURED PROMISE

WITH CERTIFICATION AS OUR CORNERSTONE AND WARRANTY AS OUR COMMITMENT, ENERACK IS A TRUSTED PARTNER FOR GLOBAL SOLAR PROJECTS.

Enerack is committed to providing safe and reliable structural solutions for solar projects worldwide. Guided by a life-cycle value approach, we integrate structural safety and engineering compatibility into every stage of product design, supported by a comprehensive quality control system that covers raw materials, manufacturing processes, and performance testing.

Our mounting systems utilize high-strength aluminum alloys and steel, optimized through rigorous testing to deliver exceptional performance. They are designed to adapt to diverse complex terrains and extreme climate conditions, ensuring structural integrity and durability throughout their entire life cycle.

Enerack's products have obtained multiple internationally recognized certifications, meeting the key market access requirements across the Americas, Europe, Australia, and beyond. We confidently offer a 15-year product warranty, backed by independent third-party certifications, to provide solid assurance for our clients' long-term investments:



ISO 9001: 2015 quality management system certified

# Certificate



**CERTIFICATE**  
No. Z2 107999 0002 Rev. 00

Holder of Certificate: **Xiamen Enerack Technology Co., Ltd.**  
203A, No.6 Huli Avenue, Huli District, Xiamen, P.R. China  
Fujian's PROVINCE OF CHINA

Certification Mark:

Product: **Photovoltaic (PV) Mounting System**  
Model(s): **Tile roof mounting system**

Parameters:  
Construction site: Germany, the site altitude above sea level is less than 200m.  
Snow conditions: Snow district, Zone 2  
Wind zone: Wind zone 2  
Site: height of building: 10m  
Angle of slope: 30°

Tested according to:  
The product was tested on a voluntary basis and complies with the essential requirements. The certification mark shown above can be affixed on the product. It is not permitted to alter the certification mark in any way. In addition, the certification holder must not transfer the certificate to third parties. This certificate is valid until the latest date, unless it is cancelled earlier. All applicable requirements of the Testing, Certification, Validation and Verification Regulations of TÜV SÜD Group have to be complied. For details see: www.tuv-sud.com/cert

Test report no.: 641902514701  
2020-06-03

Date: 2025-06-04

(Allen Guo)

Page 1 of 1  
TUV SUD Product Service GmbH - Certification Body - Riederstraße 65 - 82035 Munich - Germany

**Certificate of Conformity of the Factory Production Control**  
1029 - CPR - CN2300005219

In compliance with Regulation 305/2011(EU) of the European Parliament and of the Council of 9 March 2011 (The Construction Products Regulation or CPR), this certificate applies to the construction product **Aluminum Structures, described in annex.**

placed on the market under the name or trade mark of **Xiamen Enerack Technology Co., Ltd.**  
203A, No.6 Huli Avenue, Huli District, Xiamen, P.R. China

and produced at the manufacturing plant: **CNIND280358**

This certificate attests that all provisions concerning the assessment and verification of constancy of performance described in Annex ZA of the standard(s) **EN 1090-1:2009+A1:2011** under system 2<sup>nd</sup> are applied and that the factory production control is assessed to be in conformity with the applicable requirements.

This certificate is valid from 15 December 2022 until 15 October 2025, and will remain valid as long as neither the harmonized standard, the construction product, the AUCP methods nor the manufacturing conditions in the plant are modified significantly, unless suspended or withdrawn by the notified body production control certification body.

Issue 2: Certified with 502 until 15 October 2023

Approved by:

Page 1/2

**Certificate of Compliance**

Issued to: **Xiamen Enerack Technology Co., Ltd.**  
203A, No.6 Huli Avenue, Huli District, Xiamen, China  
Xiamen FJ 361006 China

Certificate Number: **E539682**

Report Reference: **E539882-20250401**

Issue Date: **2025-04-01**

This certificate confirms that representative samples of: **MOUNTING SYSTEMS, MOUNTING DEVICES, CLAMPING DEVICES AND GROUND LUGS FOR USE WITH PHOTOVOLTAIC MODULES AND PANELS** (See Addendum Page for Product Designations). Have been evaluated by UL, in accordance with the Standard(s) indicated on this Certificate.

**UL 2703, Mounting Systems, Mounting Devices, Clamping/Retention Devices, and Ground Lugs for Use with Flat-Plate Photovoltaic Modules and Panels.**

Additional Information:  
See UL Product iQ® at <https://ulprospector.com> for additional information.

This Certificate of Compliance indicates that representative samples of the product described in the certification report have met the requirements for UL certification. It does not provide authorization to apply the UL Mark. Only the Authorization Page that references the Follow-Up Services Procedure for ongoing surveillance provides authorization to apply the UL Mark.

Only those products bearing the UL Mark should be considered as being UL Certified and covered under UL's Follow-Up Services.

Look for the UL Certification Mark on the product.

David Proulx  
UL Mark Certification Program Owner

Page 1 of 2

**Certificate of Compliance**

Issued to: **Xiamen Enerack Technology Co., Ltd.**  
203A, No.6 Huli Avenue, Huli District, Xiamen, China  
Fujian 361006 China

Certificate Number: **UL-US-2436582-0**

Report Reference: **E539717-20240920**

Issue Date: **2024-09-23**

This certificate confirms that representative samples of **KDER - Grounding and Bonding Equipment** (See Addendum Page for Product Designations). Have been evaluated by UL, in accordance with the Standard(s) indicated on this Certificate.

**UL 467, Edition 11, Issue Date 2022-04-20**

Additional Information:  
See UL Product iQ® at <https://ulprospector.com> for additional information.

This Certificate of Compliance indicates that representative samples of the product described in the certification report have met the requirements for UL certification. It does not provide authorization to apply the UL Mark. Only the Authorization Page that references the Follow-Up Services Procedure for ongoing surveillance provides authorization to apply the UL Mark.

Only those products bearing the UL Mark should be considered as being UL Certified and covered under UL's Follow-Up Services.

Look for the UL Certification Mark on the product.

David Proulx  
UL Mark Certification Program Owner

Page 1 of 2

**Certificate of Compliance**

Issued to: **Xiamen Enerack Technology Co., Ltd.**  
203A, No.6 Huli Avenue, Huli District, Xiamen, China  
Xiamen FJ 361006 China

Certificate Number: **E539682**

Report Reference: **E539882-20250331**

Issue Date: **2025-04-01**

This certificate confirms that representative samples of **MOUNTING SYSTEMS, MOUNTING DEVICES, CLAMPING DEVICES AND GROUND LUGS FOR USE WITH PHOTOVOLTAIC MODULES AND PANELS** (See Addendum Page for Product Designations). Have been evaluated by UL, in accordance with the Standard(s) indicated on this Certificate.

**UL 2703, Mounting Systems, Mounting Devices, Clamping/Retention Devices, and Ground Lugs for Use with Flat-Plate Photovoltaic Modules and Panels.**

Additional Information:  
See UL Product iQ® at <https://ulprospector.com> for additional information.

This Certificate of Compliance indicates that representative samples of the product described in the certification report have met the requirements for UL certification. It does not provide authorization to apply the UL Mark. Only the Authorization Page that references the Follow-Up Services Procedure for ongoing surveillance provides authorization to apply the UL Mark.

Only those products bearing the UL Mark should be considered as being UL Certified and covered under UL's Follow-Up Services.

Look for the UL Certification Mark on the product.

David Proulx  
UL Mark Certification Program Owner

Page 1 of 2

**Certificate of Structural Conformity (New Zealand)**  
Certificate No.: **JD-CERT-NZ-2025/0003**

This is to certify that the following photovoltaic mounting systems, supplied by Xiamen Enerack Technology Co., Ltd., have been structurally assessed and certified by JD Engineering Group Pty Ltd for compliance with the applicable New Zealand Building Code (NZBC) and structural standards:

- Enerack Standard Mounting Series System
- Enerack H-Rack Series System
- Enerack Mini Rack System

Product Identification  
Placed on the market under the name or trade mark of: **Xiamen Enerack Technology Co., Ltd.**  
203A, No.6 Huli Avenue, Huli District, Xiamen, P.R. China

Produced in the manufacturing plant: **JD-CERT-NZ-2025/0003**

Scope of Certification  
The certification covers the structural adequacy of the above systems under design actions in accordance with:  
• AS/NZS 1170.0:2002 - Structural design actions, Part 0: General principles  
• AS/NZS 1170.1:2002 - Structural design actions, Part 1: Permanent, imposed and other actions  
• AS/NZS 1170.2:2002 - Structural design actions, Part 2: Wind actions  
• AS/NZS 1170.3:2004 - Structural design actions, Part 3: Earthquake actions - New Zealand  
• AS/NZS 1564.1:1997 - Aluminum structures, Part 1: Limit state design

The scope of this certification is limited to the structural performance of the aluminum mounting systems and does not extend to electrical components, installation workmanship, or non-structural aspects.

Validity  
This certificate is valid from **18 September 2025 until 18 September 2028**, provided that:  
• No significant changes are made to the certified systems, materials, or manufacturing processes.  
• Installation is carried out in accordance with the manufacturer's guidelines and relevant building code requirements.

The certificate may be suspended or withdrawn if modifications occur or if non-conformance is identified.

Authorized by:

Notes:  
• This document is issued exclusively for structural certification purposes in New Zealand.  
• Any unauthorised alteration, forgery, or falsification of this document is unlawful.  
• JD Engineering Group Pty Ltd accepts no liability beyond the scope of the structural certification as described above.

**Certificate of Conformity of Quality Management System Certification**

Zhongjian Certification Co., Ltd.

**XIAMEN ENERACK TECHNOLOGY CO., LTD.**  
1501 ZHONGJIAN ROAD, SHENYANG, LIAONING PROVINCE, CHINA

Standard: **GB/T 19001-2016/ISO 9001:2015 Standard**

**SOLAR MOUNTING AND ITS ACCESSORIES**

Date of Issue: **2024-03-07**

Expiry date: **27 March 2029**

IAF CNAS

Enle Certificazione Macchine Srl  
Via Ca' Bella, 243 - Loc. Castello di Senovalle - 40053 Valdamoggio (BO) - ITALY  
☎ +39 051 4705141 | ✉ info@enlecertma.it | www.enlecertma.it

**Certificate**

Form QAL\_10-A06, version 03, effective since June 1<sup>st</sup>, 2022

No. **OP240330\_XE1UC085**

Test Report / Technical Construction File no. **MD-TCF-240330-81020**

Certificate's Holder: **Xiamen Enerack Technology Co., Ltd.**  
203A, No.6 Huli Avenue, Huli District, Xiamen, China

Certification ECM Mark:

Product: **Balasted-UI East-West Integrated Rear Leg**  
Model(s): **ERK-BIR-10, ERK-BIR-15**

Verification to: **Standard: EN ISO 12100:2010**  
related to CE Directive(s): **2006/42/EC (Machinery)**

Remark:  
The manufacturer has voluntarily decided to submit its documents concerning the above-mentioned product for verification. Enle Certificazione Macchine certifies that the documentation made available and immediately returned to it, as containing sensitive data, meets the essential requirements of the above-mentioned directive(s). The verification activity carried out exclusively concerned the technical documentation and no verification was carried out on the product. This document cannot replace the EC Declaration of Conformity. This document was issued in accordance with regulation (EU) 2017/745 published on the website of [www.enlecertma.it](http://www.enlecertma.it) and concerning voluntary certifications with a non-notified procedure.

Issue date: **20 March 2024**  
Expiry date: **27 March 2029**

Enle Certificazione Macchine Srl  
Via Ca' Bella, 243 - Loc. Castello di Senovalle - 40053 Valdamoggio (BO) - ITALY  
☎ +39 051 4705141 | ✉ info@enlecertma.it | www.enlecertma.it

**Certificate**

Form QAL\_10-A06, version 03, effective since June 1<sup>st</sup>, 2022

No. **OP231025\_XE1UC076**

Test Report / Technical Construction File no. **MD-TCF-231025-81047**

Certificate's Holder: **Xiamen Enerack Technology Co., Ltd.**  
203A, No.6 Huli Avenue, Huli District, Xiamen, China

Certification ECM Mark:

Product: **Enerack Standing Seam Clamp**  
Model(s): **ERK-IRB-C05**

Verification to: **Standard: EN ISO 12100:2010**  
related to CE Directive(s): **2006/42/EC (Machinery)**

Remark:  
The manufacturer has voluntarily decided to submit its documents concerning the above-mentioned product for verification. Enle Certificazione Macchine certifies that the documentation made available and immediately returned to it, as containing sensitive data, meets the essential requirements of the above-mentioned directive(s). The verification activity carried out exclusively concerned the technical documentation and no verification was carried out on the product. This document cannot replace the EC Declaration of Conformity. This document was issued in accordance with regulation (EU) 2017/745 published on the website of [www.enlecertma.it](http://www.enlecertma.it) and concerning voluntary certifications with a non-notified procedure.

Issue date: **25 October 2023**  
Expiry date: **24 October 2028**

Enle Certificazione Macchine Srl  
Via Ca' Bella, 243 - Loc. Castello di Senovalle - 40053 Valdamoggio (BO) - ITALY  
☎ +39 051 4705141 | ✉ info@enlecertma.it | www.enlecertma.it

**Certificate of Compliance**

Form QAL\_10-A06, version 03, effective since March 23<sup>rd</sup>, 2025

No. **OP211227\_XE1SU14**

Test Report / Technical Construction File no. **TCF-211224-80583**

Certificate's Holder: **Xiamen Enerack Technology Co., Ltd.**  
203A, No.6 Huli Avenue, Huli District, Xiamen, China

Certification ECM Mark:

Product: **Enerack Carport Mounting System**  
Model(s): **ERK-WPC**

Verification to: **Standard: EN 1090-1:2009+A1:2011**  
related to Regulation (EU): **Regulation (EU) 305/2011 (Regulation for the Marketing of Construction Products)**

Remark:  
This document has been issued on a voluntary basis and upon request of the manufacturer. It is our opinion that the technical documentation received from the manufacturer is satisfactory for the requirements of the ECM Certification Mark. The conditions must be observed on the products according to the ECM regulation about its release and its use.

Additional information and certification about the Marking:  
The manufacturer is responsible for the CE Marking process, and if necessary, must refer to a Notified Body. This document has been issued on the basis of the regulation on ECM Certification Mark for the certification of products. (ISO) ECM mark available at: [www.enlecertma.it](http://www.enlecertma.it)

Issue date: **27 December 2021**  
Expiry date: **24 December 2026**

Enle Certificazione Macchine Srl  
Via Ca' Bella, 243 - Loc. Castello di Senovalle - 40053 Valdamoggio (BO) - ITALY  
☎ +39 051 4705141 | ✉ info@enlecertma.it | www.enlecertma.it



East & West Ballasted PRO-Romania



Pole Mount-Australia



Carport Mount-Bulgaria



East & West Ballasted PRO-Switzerland



Ground Mount-Thailand



Ground Mount-Romania



**East & West Ballasted PRO-Croatia**



**Tile Roof Mount-Slovenia**



**Metal Roof Mount-New Zealand**



**Metal Roof & Carport Mount-Philippines**



**Ballasted PRO-Latvia**



**Tile Roof Mount-Hungary**



# Rail & Accessories

According to different markets, different customer requirements, as well as the project budget, we design and produce various types of rails and accessories to meet the customer's projects need. Each product is subjected to rigorous strength calculation, SGS testing, TUV, CE, and AS/NZS1170.2 certifications.



**1** Item No. ERK-R52  
Description Enerack 52mm Rail



**2** Item No. ERK-R52L  
Description Enerack 52mm L Rail



Item No. ERK-R26  
Description Enerack 26mm Rail



Item No. ERK-R29  
Description Enerack 29mm Rail



Item No. ERK-R41-2  
Description Enerack 41mm Rail for Ballasted Mounting



Item No. ERK-R42  
Description Enerack 42mm Rail



Item No. ERK-R43  
Description Enerack 43mm Rail



Item No. ERK-R46  
Description Enerack 46mm Rail



Item No. ERK-R50  
Description Enerack 50mm Rail



Item No. ERK-R60  
Description Enerack 60mm Rail



# Rail & Accessories



**11**  
Item No. ERK-R62  
Description Enerack 62mm Rail



**12**  
Item No. ERK-R62C  
Description Enerack 62mm C Rail



Item No. ERK-FEC-3540  
Description 35 & 40mm Exchange End Clamp Kit



**19**  
Item No. ERK-AIC  
Description Universal Adjustable (30-40mm) Inner Clamp Kit



**13**  
Item No. ERK-R65  
Description Enerack 65mm Rail



**14**  
Item No. ERK-R70  
Description Enerack 70mm Rail



Item No. ERK-EIC  
Description Universal Adjustable (30-40mm) Inner Clamp Kit (Include Spring & Earthing Clip)



**21**  
Item No. ERK-RCC  
Description Standard Rail Clamp with the Carriage Bolt



**15**  
Item No. ERK-SFR-01  
Description Splice for Rail Kit 01



**16**  
Item No. ERK-SFR-02  
Description Splice for Rail Kit 02



Item No. ERK-RCN  
Description Standard Rail Clamp with ERK Nuts Kit



**23**  
Item No. ERK-RCB  
Description Standard Rail Clamp with T-Bolt Kit



**17**  
Item No. ERK-SFR-06  
Description Inner Splice for Rail Kit 06



**18**  
Item No. ERK-FEC-3035  
Description 30 & 35mm Exchange End Clamp Kit



Item No. ERK-FEC  
Description General End Clamp Kit



**25**  
Item No. ERK-FCL  
Description General End Clamp Kit L=60mm



**20**

**22**

**24**

**26**

# Rail & Accessories



**27** Item No. ERK-EMC  
Description Universal Adjustable (27.5-40mm)  
Mid Clamp Kit



**28** Item No. ERK-NEC  
Description Universal Adjustable (27.5-35mm)  
End Clamp Kit



Item No. ERK-TIC  
Description Thin Film Double-glazed  
Module Inner Clamp Kit



**35** Item No. ERK-TEC  
Description Thin Film Double-glazed  
Module End Clamp Kit



**29** Item No. ERK-ACL  
Description Universal Adjustable (30-40mm)  
Inner Clamp Kit L=60mm



**30** Item No. ERK-ECL  
Description Universal Adjustable (30-40mm)  
Inner Clamp Kit (Include Spring  
& Earthing Clip) L=60mm



Item No. ERK-REL-A  
Description Standard Rail Earthing  
Plate Type A



**37** Item No. ERK-REL-B  
Description Standard Rail Earthing  
Plate Type B



**31** Item No. ERK-NUT  
Description ERK Nuts



**32** Item No. ERK-PWC  
Description Solar Panel Water Drainage  
Clips



Item No. ERK-NBW  
Description ERK Nuts Assembly with Bolt  
and Washer Kit



Item No. ERK-TBK  
Description T-Bolt Kit



**33** Item No. ERK-REC  
Description ERK-R52 Rail & ERK-R52L  
Rail End Cover Cap



**34** Item No. ERK-R42B  
Description Enerack 42mm B Rail



Item No. ERK-ELG-02  
Description Earthing Lug Kit 02



**41** Item No. ERK-ELG-03  
Description Earthing Lug Kit 03



# Rail & Accessories



**43**  
 Item No. ERK-ELG-05  
 Description Earthing lug kit 05 for 8mm cable



**44**  
 Item No. ERK-CCP-01  
 Description Cable Clip for PV Panels for Holding 3 Cables



**45**  
 Item No. ERK-CCP-02  
 Description Cable Clip for PV Panels for Holding 2 Cables



**46**  
 Item No. ERK-CCP-03  
 Description Cable Clip for PV Panels for Holding 3 Cables



**47**  
 Item No. ERK-CCP-04  
 Description Cable Clip for PV Panels for Holding 2 Cables



**48**  
 Item No. ERK-CCP-05  
 Description Cable Clip for PV Panels for Holding 4 Cables



**49**  
 Item No. ERK-CCP-06  
 Description Cable Clip for PV Panels for Holding 3 Cables



**50**  
 Item No. ERK-CCP-07  
 Description 90° Cable Clip for PV Panels for Holding 2 Cables



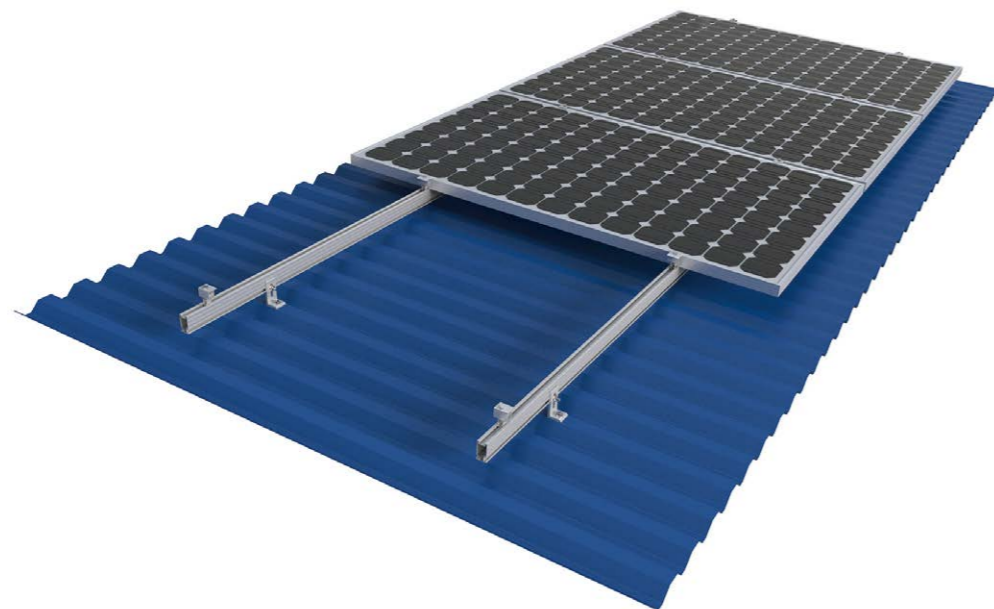
# Metal Roof Attachment

Enerack Tin roof systems divided into two fixing methods:

1. Drilling solutions, like bracket L-foot, hanger bolt, T type hook etc.
2. Standing seam clamp, direct mounting, no damage to the roof.

A design that includes major specifications saves you inventory cost, quick and easy to install. Innovative design of rail connect base-support can effectively increase the product strength, ensure the safety of the product use. Enerack have a large variety of tin roof brackets for customers' choice Customization allowed according to customers' need to meet special installation requirements.

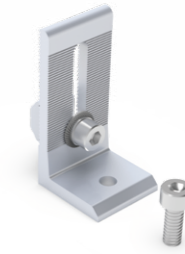
Technical features:	
Product name	Metal roof mounting system
Application	Metal roof
Inclination	Parallel to the roof
Material	AL 6005-T5, SUS 304, EPDM
Finish	AL 6005-T5 Anodized, SUS 304 Shot blasting
Module orientation	Landscape or Portrait



Item No. ERK-TRB-D01  
Description L Feet for Corrugated or Trapezoidal Sheet Metal



Item No. ERK-TRB-D01-01  
Description L Feet for Standing Seam Clamp



Item No. ERK-TRB-D03  
Description Hanger Bolt L Feet for Corrugated Fibre Cement, Corrugated or Trapezoidal Sheet Metal (M10×180, M10×200, M10×250, M10×300)



Item No. ERK-TRB-D05  
Description Hanger Bolt for Corrugated Fibre Cement, Corrugated or Trapezoidal Sheet Metal (M10×180, M10×200, M10×250, M10×300)



Item No. ERK-TRB-D06  
Description 6# Tin Roof Hook for Trapezoidal Sheet Metal



Item No. ERK-TRB-D07  
Description 7# Tin Roof Hook for Trapezoidal Sheet Metal



Item No. ERK-TRB-D08  
Description 8# Tin Roof Hook for Trapezoidal Sheet Metal



Item No. ERK-TRB-D09  
Description Asphalt Shingles Interface



# Metal Roof Attachment



**9**  
Item No. ERK-TRB-D10  
Description 26mm Mini Rail for Corrugated or Trapezoidal Sheet Metal



**10**  
Item No. ERK-TRB-D11  
Description 29mm U Type Rail for Corrugated or Trapezoidal Sheet Metal



**17**  
Item No. ERK-TRB-D25  
Description Offset Hole L Feet for Corrugated or Trapezoidal Sheet Metal



**18**  
Item No. ERK-TRB-D26  
Description Hanger Bolt Offset Hole L Feet for Corrugated Fibre Cement, Corrugated or Trapezoidal Sheet Metal (M10×180, M10×200, M10×250, M10×300)



**11**  
Item No. ERK-TRB-D13  
Description 60mm Mini Rail for Corrugated or Trapezoidal Sheet Metal



**12**  
Item No. ERK-TRB-D14  
Description 46mm Mini Rail for Corrugated or Trapezoidal Sheet Metal



**19**  
Item No. ERK-TRB-D27  
Description Height adjust plate for L feet



**20**  
Item No. ERK-TRB-D28  
Description 70mm Mini Rail for Corrugated or Trapezoidal Sheet Metal



**13**  
Item No. ERK-TRB-D18  
Description 18# Tin Roof Hook for Trapezoidal Sheet Metal



**14**  
Item No. ERK-TRB-D20  
Description 65mm Mini Rail for Corrugated or Trapezoidal Sheet Metal



**21**  
Item No. ERK-TRB-D29  
Description 115mm T feet for Corrugated or Trapezoidal Sheet Metal



**22**  
Item No. ERK-TRB-D30  
Description 50mm U Type Rail for Corrugated or Trapezoidal Sheet Metal



**15**  
Item No. ERK-TRB-D21  
Description 21# Tin Roof Hook for Trapezoidal Sheet Metal



**16**  
Item No. ERK-TRB-D22  
Description 142mm L Feet for Trapezoidal Sheet Metal



**23**  
Item No. ERK-TRB-D31  
Description 165mm L Feet for Corrugated or Trapezoidal Sheet Metal



**24**  
Item No. ERK-TRB-D32  
Description 152mm L Feet for Trapezoidal Sheet Metal



# Metal Roof Attachment



**25**  
 Item No. ERK-TRB-D33  
 Description 120mm Two Holes L Feet for Corrugated or Trapezoidal Sheet Metal



**26**  
 Item No. ERK-TRB-D34  
 Description Trapezoidal Sheet Metal Base



Item No. ERK-TRB-C01  
 Description Klip Lok 406 & 700 Interface



**30**

**27**  
 Item No. ERK-TRB-D35  
 Description Corrugated Sheet Metal Base



**28**  
 Item No. ERK-TRB-D37  
 Description L Feet Adapter for Corrugated Sheet Metal



Item No. ERK-TRB-C02  
 Description Klip Lok 406 & 700 Interface

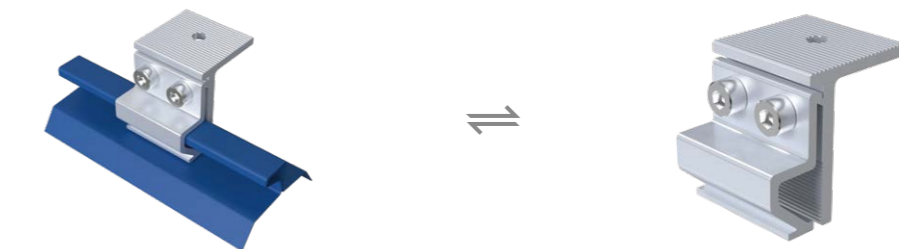


**31**

**29**  
 Item No. ERK-FTH  
 Description Flat Rooftop Thermal and Hydro Insulation

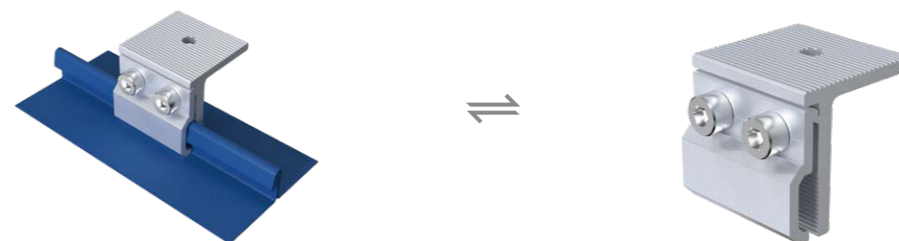


Item No. ERK-TRB-C04  
 Description Standing Seam Clamp



**32**

Item No. ERK-TRB-C05  
 Description Standing Seam Clamp

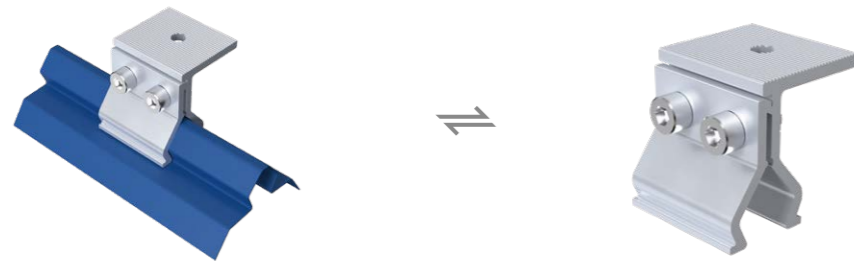


**33**

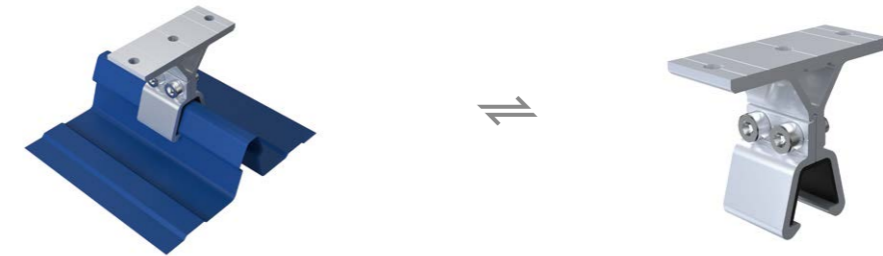
# Metal Roof Attachment



34  
Item No. ERK-TRB-C06  
Description Standing Seam Clamp



Item No. ERK-TRB-C15  
Description Metdek 500 Interface



38

35  
Item No. ERK-TRB-C10  
Description Stainless Steel Tin Interface Bracket



Item No. ERK-TRB-C16  
Description RiverClack Roofing Profile



39

36  
Item No. ERK-TRB-C13  
Description Lysaght Klip-lok Interface



Item No. ERK-TRB-C20  
Description Lysaght Klip-lok 406 Interface



40

37  
Item No. ERK-TRB-C14  
Description Metdek 855 Dimondek 630 Interface



Item No. ERK-TRB-C21  
Description Kalzip Standing Seam Clamp.



41



# Metal Roof Attachment



42  
Item No. ERK-TRB-C22  
Description KR-18 Metal Roof Standing Seam Clamp.



Item No. ERK-TRB-C26  
Description WeatherClip II 700 Interface



46

43  
Item No. ERK-TRB-C23  
Description Klip Lok 700 Interface

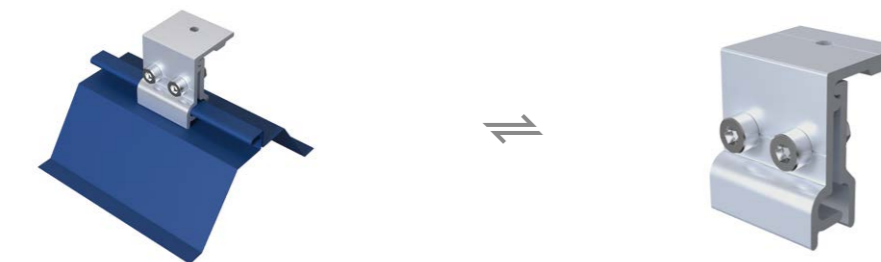


Item No. ERK-TRB-C27  
Description Klip Lok 700 Interface



47

44  
Item No. ERK-TRB-C24  
Description Standing Seam Clamp



Item No. ERK-TRB-C29  
Description Lysaght Klip-lok 406 Interface



48

45  
Item No. ERK-TRB-C25  
Description Klip Lok 700 Interface



Item No. ERK-TRB-C30  
Description WeatherClip II 700 Interface



49

# Metal Roof Attachment



50

Item No. ERK-TRB-C32  
Description Valio Metal Sheet Roof Interface



Item No. ERK-TRB-C38  
Description Lysaght Klip-lok 700 Interface



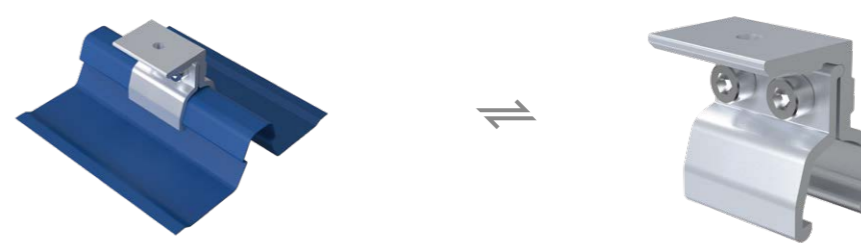
54

51

Item No. ERK-TRB-C33  
Description Standing Seam Clamp



Item No. ERK-TRB-C39  
Description Lysaght Klip-lok 700 Interface



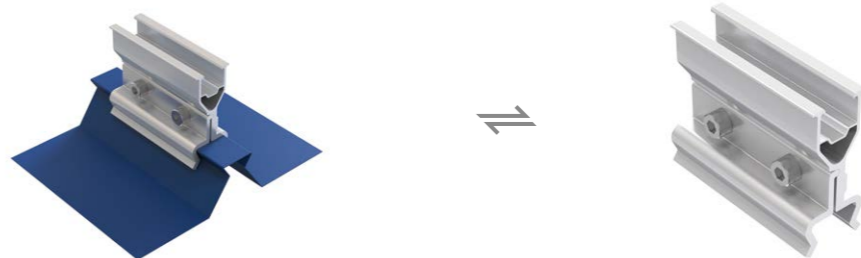
55

52

Item No. ERK-TRB-C36  
Description Standing Seam Clamp



Item No. ERK-TRB-C49  
Description UNI-ENERGY Sandwich Roof Standing Seam Clamp



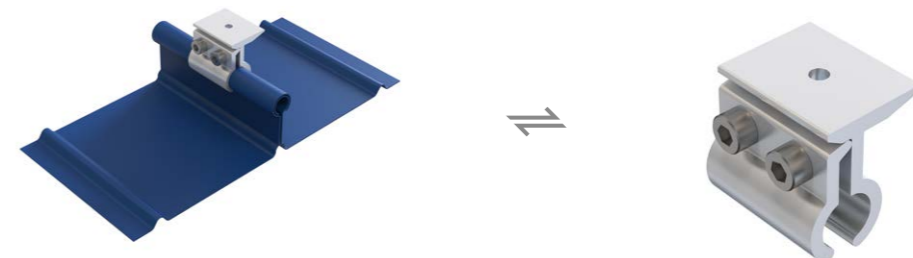
56

53

Item No. ERK-TRB-D37  
Description L Feet Adapter for Corrugated Sheet Metal



Item No. ERK-TRB-C52  
Description Kalzip Standing Seam Clamp



57

# Tile Roof Attachment

Enerack has many types of tile roof hooks, suitable for most roof types of tile, flat tile, slate tile, asphalt shingle tile.

A design that includes major specifications saves you inventory cost, quick and easy to install. Innovative design of rail connect base-support can effectively increase the product strength, ensure the safety of the product use.

Enerack has a large variety of roof hooks provide customers options.

Customization allowed according to customers' need to meet special installation requirements.

## Technical features:

Product name	Tile roof mounting system
Application	Tile roof, Flat tile roof, Slate roof
Inclination	Parallel to the roof
Material	AL 6005-T5, SUS 304
Finish	AL 6005-T5 Anodized, SUS 304 Shot blasting
Module orientation	Landscape or Portrait



Item No. ERK-TRH-T01  
Description Tile Roof Hook



Item No. ERK-TRH-T02  
Description Tile Roof Hook



Item No. ERK-TRH-T03  
Description Tile Roof Hook



Item No. ERK-TRH-T04  
Description Tile Roof Hook for Holding 3 Cables



Item No. ERK-TRH-T05  
Description Tile Roof Hook



Item No. ERK-TRH-T06  
Description Tile Roof Hook



Item No. ERK-TRH-T07  
Description Tile Roof Hook



Item No. ERK-TRH-T08  
Description Tile Roof Hook



# Tile Roof Attachment



9

Item No. ERK-TRH-T09  
Description Tile Roof Hook



10

Item No. ERK-TRH-T10  
Description Tile Roof Hook



Item No. ERK-TRH-F01  
Description Flat Tile Roof Hook



17

Item No. ERK-TRH-F02  
Description Flat Tile Roof Hook



18

11

Item No. ERK-TRH-T11  
Description Tile Roof Hook



12

Item No. ERK-TRH-T12  
Description Tile Roof Hook



Item No. ERK-TRH-F03  
Description Flat Tile Roof Hook



19

Item No. ERK-TRH-F04  
Description Flat Tile Roof Hook



20

13

Item No. ERK-TRH-T13  
Description Tile Roof Hook



14

Item No. ERK-TRH-T14  
Description Tile Roof Hook



Item No. ERK-TRH-F05  
Description Flat Tile Roof Hook



21

Item No. ERK-TRH-F06  
Description Flat Tile Roof Hook



22

15

Item No. ERK-TRH-T15  
Description Tile Roof Hook



16

Item No. ERK-TRH-T16  
Description Tile Roof Hook



Item No. ERK-TRH-F07  
Description Flat Tile Roof Hook



23

Item No. ERK-TRH-S01  
Description Slate Roof Hook



24

# Tile Roof Attachment



25

Item No. ERK-TRH-S02  
Description Slate Roof Hook



26

Item No. ERK-TRH-S04  
Description Slate Roof Hook



Item No. ERK-TRH-T24  
Description Tile Roof Hook



33

Item No. ERK-TRH-T26  
Description Tile Roof Hook



34

27

Item No. ERK-TRH-S05  
Description Slate Roof Hook



28

Item No. ERK-TRH-T17  
Description Tile Roof Hook



Item No. ERK-TRH-T27  
Description Tile Roof Hook



35

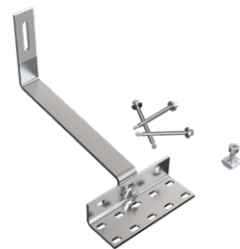
Item No. ERK-TRH-T28  
Description Tile Roof Hook



36

29

Item No. ERK-TRH-T18  
Description Tile Roof Hook



30

Item No. ERK-TRH-T19  
Description Tile Roof Hook



Item No. ERK-TRH-T29  
Description Adjustable Tile Roof Aluminum Hook



37

31

Item No. ERK-TRH-T20(t=6mm)  
Description Tile Roof Hook



32

Item No. ERK-TRH-T22  
Description Tile Roof Hook



# U Plus Series



U Plus series is the new pitched roofs products of Enerack.

1. Use the U type rail and Aluminum clamps combination make installation easier and faster than traditional installation methods, saving more time for installer;
2. Hidden rail connection will be more beautiful and integrated, completely avoiding mutual interference with mid clamp;
3. The U type design of R43 rail can store cables inside the U type rail, making it more neatly and beautiful;
4. U Plus series can be fully compatible with the existing standard products of Enerack, so for this not need to worry;
5. We offer two colors silver and black oxidation for your choose.

## Technical features:

Product name	U plus series
Application	Pitched roof
Inclination	Parallel to the roof
Material	AL 6005-T5, SUS 304
Finish	Al6005-T5 Anodized, SUS304 Shot Blasting
Module orientation	Landscape or Portrait

## Assembly



## Assembly



ERK-R43



ERK-SFR-05



ERK-EIC



ERK-FEC



ERK-URC  
(Suitable for horizontal fixed hooks such as D03 and T16)



ERK-UAC  
(Suitable for vertical fixed hooks such as D01 and T01)

# Tilt Mounting



Enerack adjustable tilt system is used for metal roof concrete roof. Fixed or adjustable angles as 10-15 deg, 15-30 deg and 30-60 degree are for your option to maximize energy production. All Products pre-assembled before shipment, to make the installation easy and quick. Unique design of inner and outer tube with adjustable joints, makes structure stronger, different from the same type products on the market today, and widely compatible with standing seam clamp.

Technical features:	
Product name	Adjustable tilt mounting system
Application	Flat concrete roof, metal roof
Inclination	10-15°, 15-30°, 30-60° or customized
Material	AL 6005-T5, SUS 304, EPDM
Finish	AL 6005-T5 Anodized
Module orientation	Landscape or Portrait



## 1 Assembly

Item No. | ERK-AFL  
Description | Adjustable Front Leg



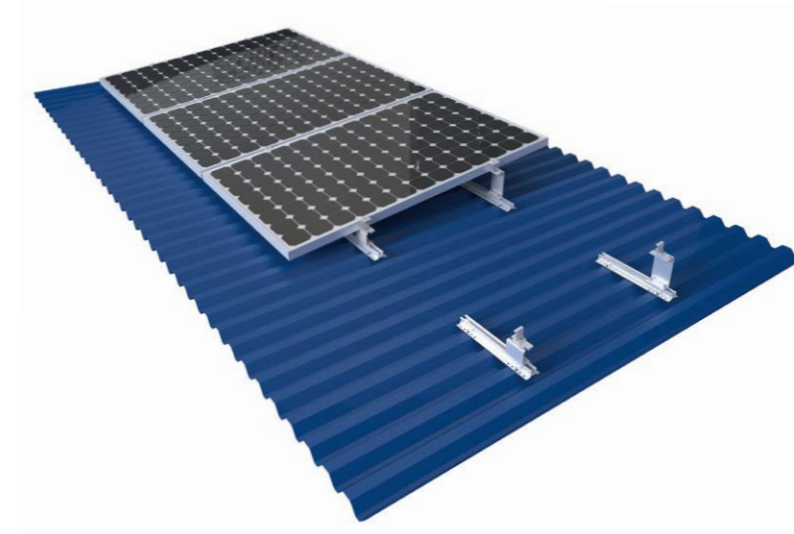
Item No. | ERK-FEC  
Description | General End Clamp Kit



Item No. | ERK-EIC  
Description | Universal Adjustable (30-40mm) Inner Clamp Kit (Include Spring & Earthing Clip)



Item No. | ERK-ARL-1015  
ERK-ARL-1530  
ERK-ARL-3060  
Description | 10-15° Adjustable Rear Leg  
15-30° Adjustable Rear Leg  
30-60° Adjustable Rear Leg



Mini Rail with 5 degree support base, lift up the height of the solar panel to achieve cooling conditions, thus maximizing power generation. Simple design, easy to install, with good price.

Technical features:	
Product name	Mini Rail Support mounting system
Application	Metal roof
Inclination	5°, 10°
Material	AL 6005-T5, SUS 304
Finish	AL 6005-T5 Anodized
Module orientation	Portrait

Item No.   ERK-MFS-5 Description   Mini Rail 5° Support Front Leg	Item No.   ERK-MRS-5 Description   Mini Rail 5° Support Rear Leg	Item No.   ERK-MFS-10 Description   Mini Rail 10° Support Front Leg
--	---	--



## 1 Assembly

Item No. | ERK-FEC-BS  
Description | General End Clamp Kit



Item No. | ERK-AIC-BS  
Description | Universal Adjustable (30-40mm) Inner Clamp Kit



Item No. | ERK-TRB-D10  
Description | 26mm Mini Rail for Corrugated or Trapezoidal Sheet Metal



Item No. | ERK-MRS-10  
Description | Mini Rail 10° Support Rear Leg



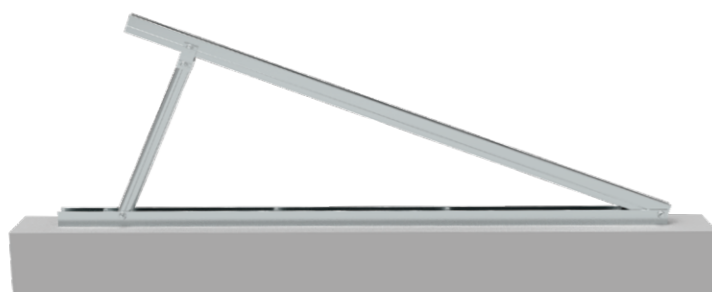
# Tilt Mounting



Enerack Tripod system is used for metal roof concrete roof, you can adjust angles as 10-15deg, 15-30deg and 30-60deg options to maximize energy production. All Products pre-assembled before shipment, to make the installation easy and quick for saving your labor cost and time. Customized angle allowed according to customers' need to meet special installation requirements.

### Technical features:

Product name	Tripod mounting system
Application	Flat concrete roof, metal roof, open terrain
Inclination	Customized
Material	AL 6005-T5, SUS 304
Finish	AL 6005-T5 Anodized
Module orientation	Landscape or Portrait



## 1 Assembly

Item No. | ERK-FTP  
Description | The Fixing Angle Tripod



Item No. | ERK-ATP  
Description | The Adjustable Angle Tripod



Item No. | ERK-R52  
Description | Enerack 52mm Rail



Item No. | ERK-EIC  
Description | Universal Adjustable (30-40mm) Inner Clamp Kit (Include Spring & Earthing Clip)



Item No. | ERK-FEC  
Description | General End Clamp Kit



Enerack Tripod systems have fixed angle and adjustable angle design for options.



1.Fixed Angle Tripod system(ERK-FTP-X): According to customers' need ,we customize different sizes and angles to make a fast, easy and lower cost installation, this is Suitable for installation at known building angle.



2.Adjustable Angel Tripod (ERK-ATP-X): According to the site need to adjust the tripod angle for installation demand. It is suitable for multi-angle installation projects.

## 2 Assembly

Beam



U Base



32-32 AL Tube



## 3 Assembly

Beam



U Base



32-32 AL Tube



27-27 AL Tube





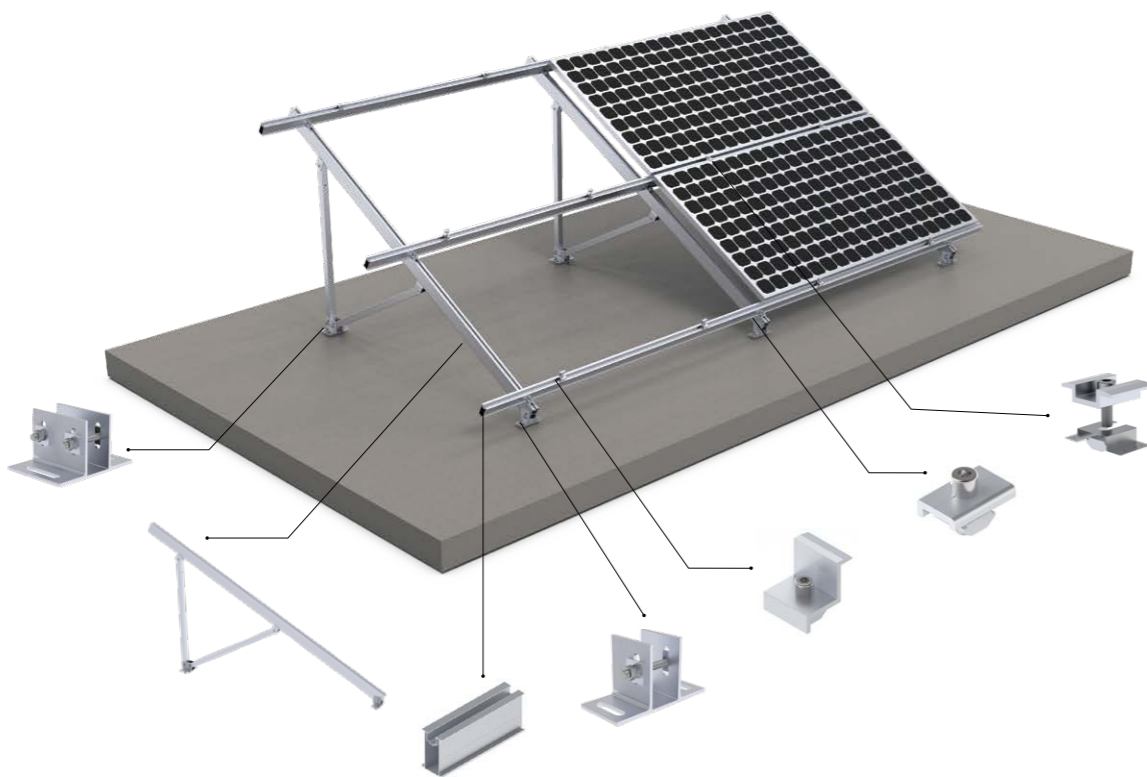
# Maxi Tripod System

Large tripod Strong wind and snow resistance, simple and convenient installation, can be installed on the cement flat roof and the ground. Different angles can be designed to meet the sunshine requirements of different regions.

## Technical features:

Product name	Maxi tripod mounting system
Application	Flat concrete roof, open terrain
Inclination	Customized
Material	AL 6005-T5, SUS 304
Finish	Anodized
Module orientation	Landscape or Portrait

## Assembly



## Assembly



ERK-MTP



ERK-GRC



ERK-R80



ERK-SFR-R80



ERK-GIC



ERK-GEC



ERK-GEL



ERK-ELG



ERK-GB2-01



ERK-GB2-02

# Ballasted-PRO Mounting



## 10 or 15 Degree dual tilt

- Maximal area utilized
- Maximal PV quantity installed
- Enerack E-W 10 or 15 is for solar installed on a flat roof, for maximized roof space utilized, and PV quantity installed.
- All parts are made of extruded aluminum, with stainless steel 304 fasteners
- EPDM foam tape is installed at the bottom of the system, separated the roof and system.
- EPDM foam tape provides better friction, and compensates for the height difference when the roof is uneven.

### Technical features:

Product name	E-W 10 or 15
Application	Flat roof
Tilt	10° or 15°
System Material	extruded aluminum profile 6005 T5
Fastener material	Stainelss steel 304
Finish	Anodized
Module orientation	Landscape



## 1 Assembly

ERK-AIC



ERK-FEC



ERK-BPF-10



ERK-BPR-10



ERK-BPF15



ERK-BPR15

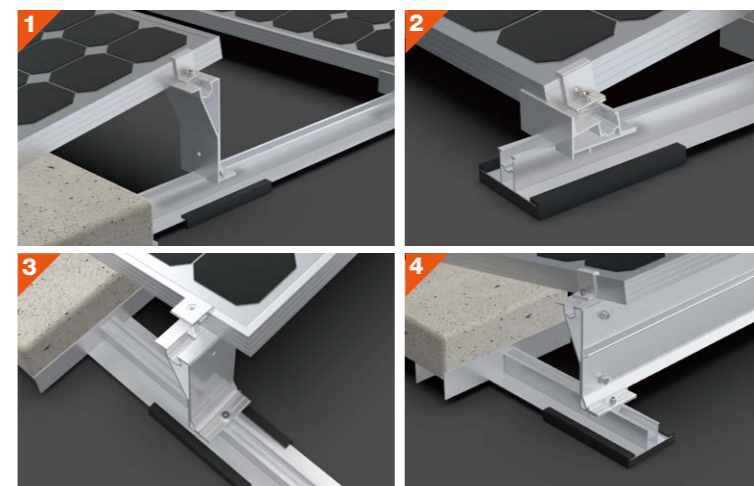


## 10 or 15 Degree tilt

- Better panel output
- The Enerack S Ballast is for solar PV to be fast and easily installed on a flat roof with 10 or 15 tilt degree inclination. All parts are made of extruded aluminum, with stainless steel 304 fasteners
- EPDM foam tape is installed at the bottom of the system, separated the roof and system.
- EPDM foam tape provides better friction and compensates for the height difference when the roof is uneven.

### Technical features:

Product name	S 10 or 15
Application	Flat roof
Tilt	10° or 15°
System Material	extruded aluminum profile 6005 T5
Fastener material	Stainelss steel 304
Finish	Anodized
Module orientation	Landscape



## 2 Assembly

ERK-R41-03



ERK-R41-02



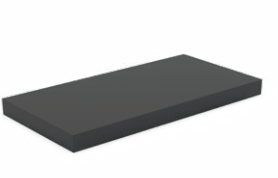
ERK-BST-02



ERK-SFR-04



ERK-EFT-03

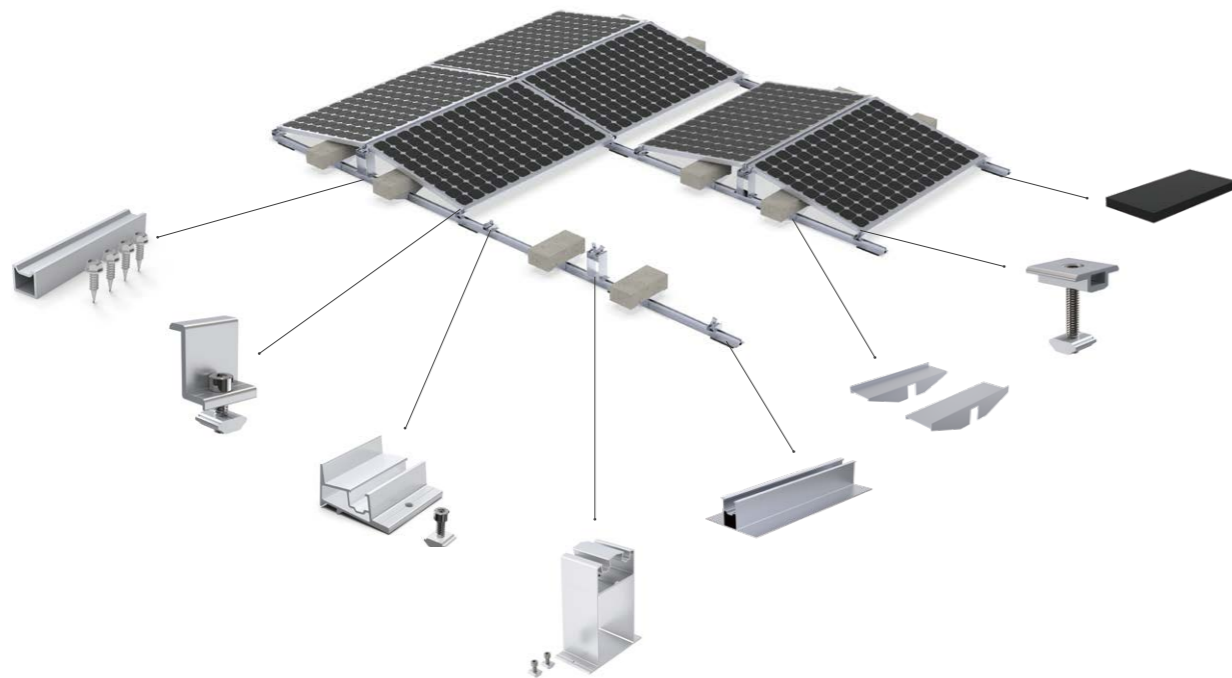


# Ballasted-Pro East-West Integrated Rear Leg

Ballasted - Pro East-West integrated rear leg is suitable for the east - west installation of Ballasted - Pro Systems, enriching the product line of Ballasted - Pro Systems. Ballasted - Pro East-West integrated rear leg simplifies the installation process and significantly reduces the number of installation steps and operations. This makes the installation more convenient and efficient, effectively reducing the overall project cost and making the entire system more integrated. There are two angle options: 10 degrees and 15 degrees. These two angle options are compatible with ERK - BPF - 10 and ERK - BPF - 15.

## Technical features:

Product name	Ballasted - Pro East-West integrated rear leg
Application	Concrete flat roof or trapezoidal sheet metal roof
Tilt	10° or 15°
System material	AL6005-T5, EPDM
Fastener material	SUS 304
Finish	Anodized
Module orientation	Landscape



## Assembly



ERK-BPF-10 ERK-BPF-15



ERK-BIP-10 ERK-BIP-15



ERK-AIC



ERK-FEC



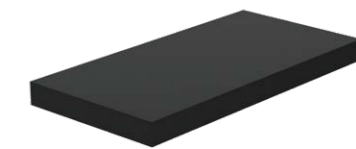
ERK-BST-02



ERK-R41-02



ERK-SFR-04



ERK-EFT-03

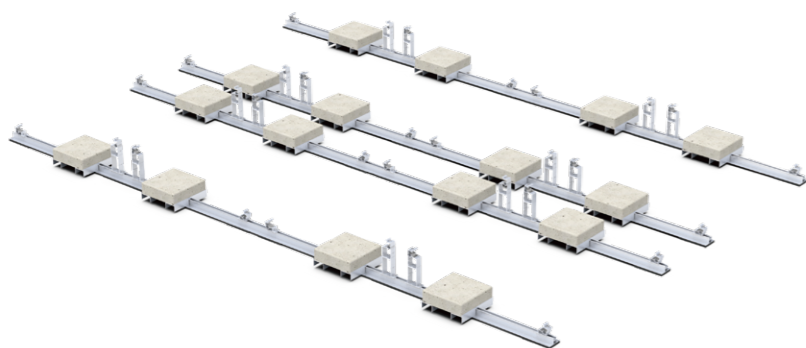
# Ballasted-ULT Mounting



Enerack East & West Ballasted-ULT Systems suitable for concrete flat roof and trapezoidal sheet metal roof. Unlike the traditional solar panel fixing method, whose fixing point at the end of the long side of the panel, this series help solar panels to be fixed anywhere on the long side. Therefore, solar panels could withstand greater wind and snow pressure. There is no need to use expansion bolts or chemical bolts on the roof, no damage to roof. The system connects all the panels with the rails into a whole. East-west facing panels have a great effect on resisting wind loads. A combination of high quality aluminium components make a robust, reliable system and quick and easy installation.

### Technical features:

Product name	Ballasted-ULT Series
Application	Concrete flat roof and trapezoidal sheet metal roof
Tilt	10° or 15°
System Material	Extruded aluminum profile 6005 T5, EPDM
Fastener material	Stainless steel 304
Finish	Anodized
Module orientation	Landscape



## 1 Assembly



### Product Feature:

Solar panels could withstand greater wind and snow pressure.  
 Maximal area utilized.  
 Maximal PV quantity installed.  
 Maximized roof space utilized, and PV quantity installed.  
 Better panel output.  
 Solar PV to be fast and easily installed on a flat roof with 10 tilt degree inclination.  
 All parts are made of extruded aluminum, with stainless steel 304 fasteners.  
 EPDM foam tape is installed at the bottom of the system, separated the roof and system.  
 EPDM foam tape provides better friction and compensates for the height difference when the roof is uneven.



East & West 10° for concrete flat roof



South or North 10° for concrete flat roof



South or North 10° for trapezoidal sheet metal roof

## 2 Assembly



# Ballasted-Ult East-West Integrated Rear Leg



Ballasted-Ult East-West integrated rear leg is suitable for the Ballasted-Ult Systems East-West layout installation, it has the same advantages as Ballasted-Ult Systems, can be installed in any position on the long side of the solar panels. Maximize to realize the strength of solar panels against the wind load and snow load. East-West integrated rear leg support simplify the number of installation, making it more easy and convenient, more efficient and faster, can effectively reduce the cost of whole project. Innovative rear leg inner clamp is more convenient for installation and make the whole systems more integrated, there are two choice 10 degree and 15 degree for your choose, compatible with ERK-BUF-10 and ERK-BUF-15.

## Technical features:

Product name	Ballasted-Ult East-West integrated rear leg
Application	Concrete flat roof or trapezoidal sheet metal roof
Tilt	10° or 15°
System material	AL6005-T5, EPDM
Fastener material	SUS 304
Finish	Anodized
Module orientation	Landscape

## Assembly

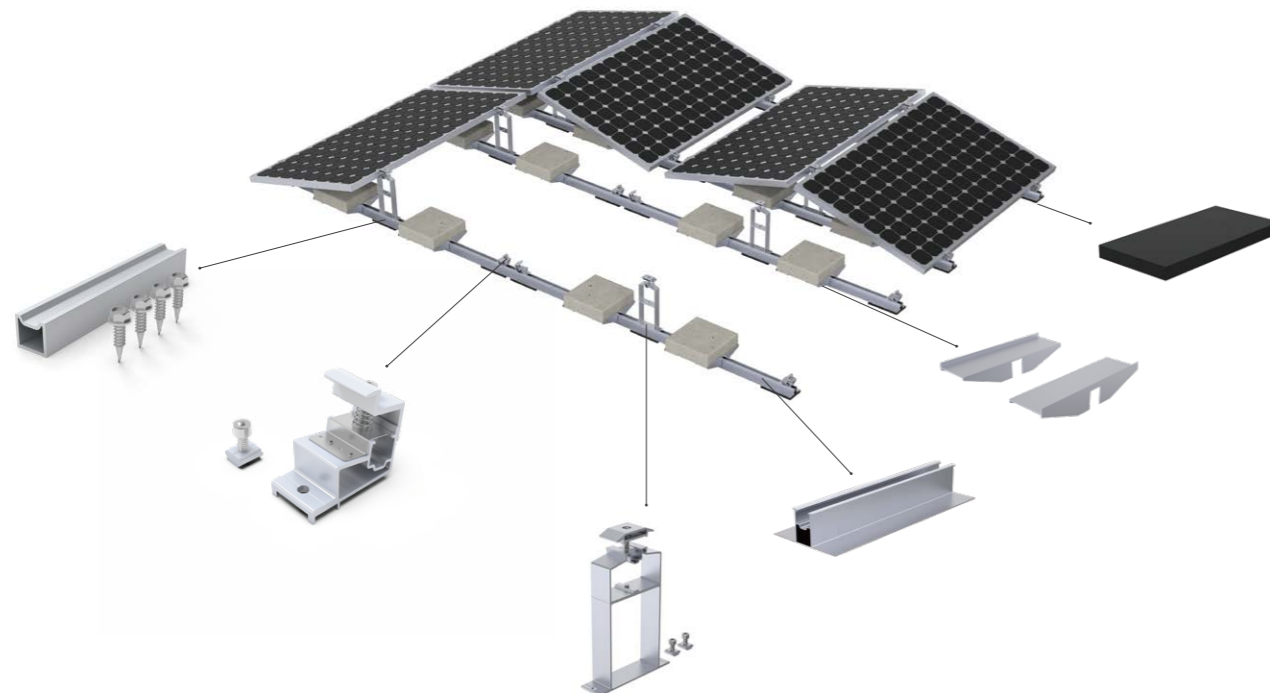


ERK-BUF-10 ERK-BUF-15 ERK-BUS-10 ERK-BUS-15

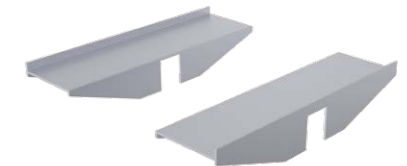


ERK-BIR-10 ERK-BIR-15

## Assembly



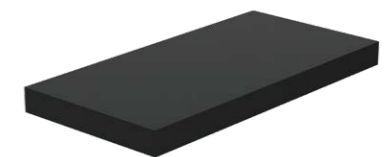
ERK-R41-02



ERK-BST-02

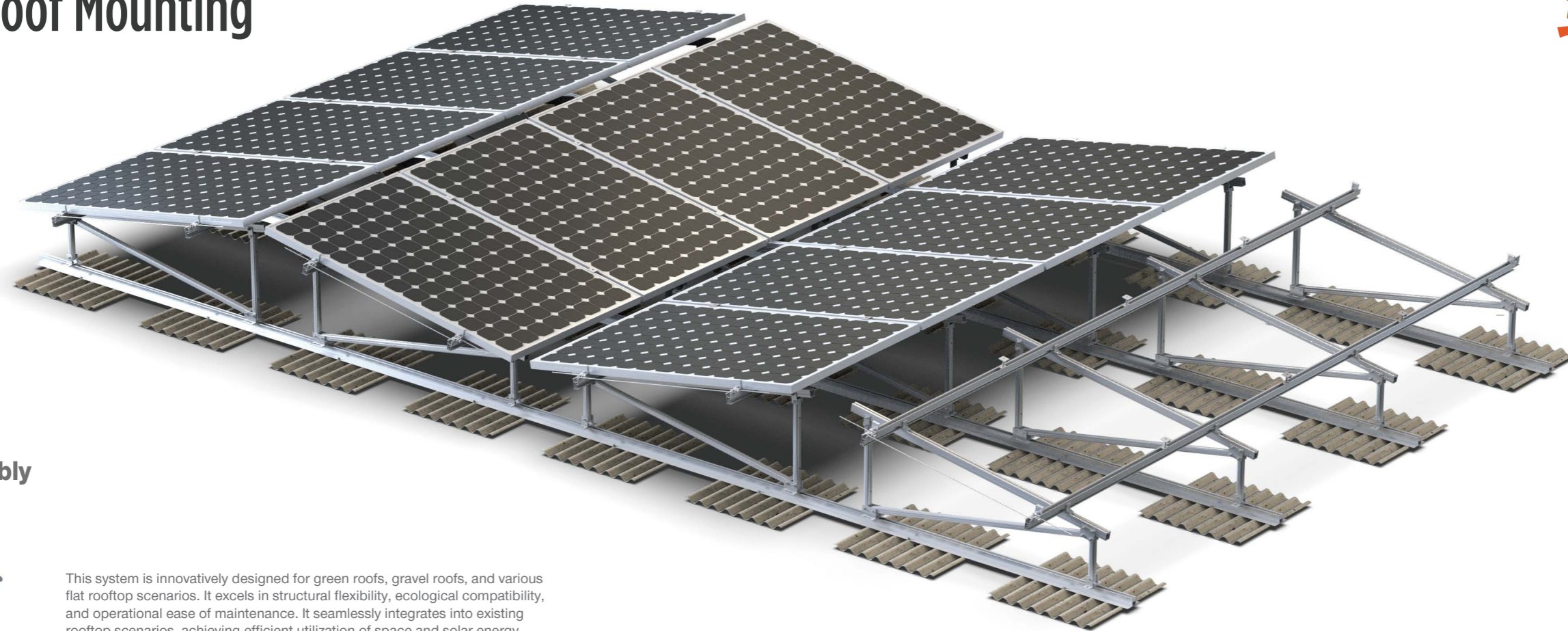


ERK-SFR-04



ERK-EFT-03

# Green Roof Mounting



## 1 Assembly

ERK-EIC



This system is innovatively designed for green roofs, gravel roofs, and various flat rooftop scenarios. It excels in structural flexibility, ecological compatibility, and operational ease of maintenance. It seamlessly integrates into existing rooftop scenarios, achieving efficient utilization of space and solar energy resources.

ERK-FEC



### Key Features:

#### 1.Highly Flexible Module Configuration

- **Adaptable Orientation and Tilt Angle:**  
Supports both landscape and portrait installation of PV modules, with tilt options of 10° or 15° to optimize sunlight utilization across different latitudes.
- **Multi-Topology System Layout:**  
Offers layout shapes such as A-frame and V-frame, allowing users to select the optimal configuration based on project requirements.

ERK-RCB



- **Adjustable Module Spacing:**  
Supports flexible and variable array spacing, taking into account the needs of operation and maintenance channels, vegetation lighting and component cleaning.

ERK-NTP



## 2 Assembly

ERK-R41-02



ERK-R41-03



ERK-R52



ERK-R80



ERK-GRB



ERK-SDS-625



### 2.Excellent Ecological Roof Compatibility

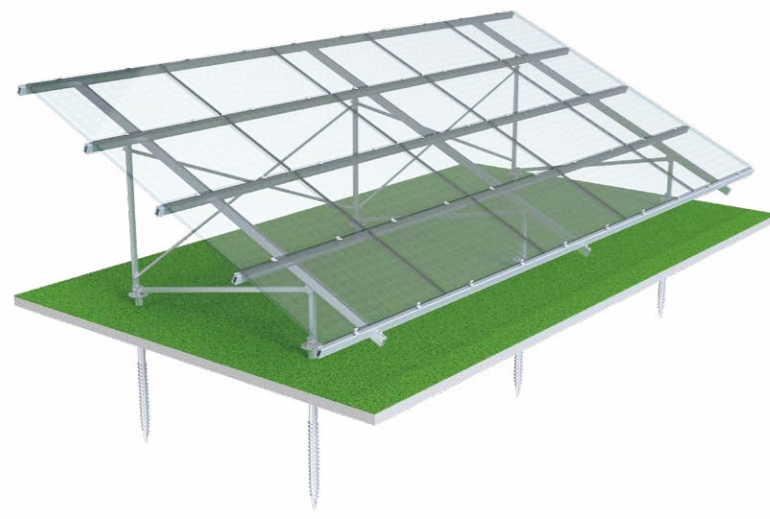
- **Roof-Friendly Elevated Design:**  
The system's modular brackets create ample space between the solar panels and the roof, ensuring space for vegetation growth and facilitating easy maintenance.
- **Non-Penetrating Installation:**  
A non-perforated mounting base maximizes protection of the roof's waterproofing layer and greening structure, eliminating the risk of water seepage.

### 3.Robust Structure and Broad Applicability

- The system offers excellent wind and snow load resistance, adapting to various climatic conditions.
- Made primarily of high-strength aluminum alloy, it offers strong corrosion resistance and a long service life.
- Suitable for both new construction and retrofit projects, including flat lightweight roofs, concrete roofs, and other substrate types.

With this system, users can achieve high power generation efficiency while preserving or enhancing rooftop greenery, promoting harmonious coexistence between architecture and ecology.

# Ground Mounting



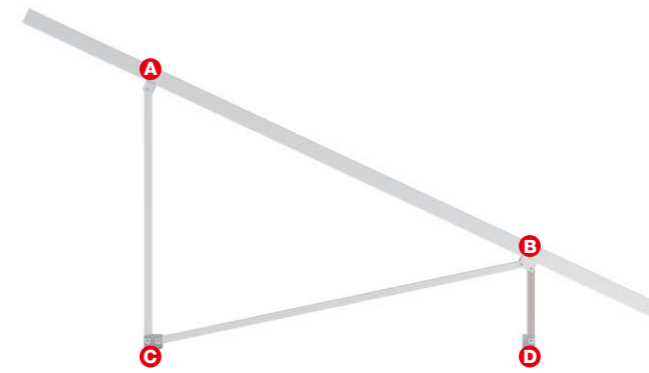
## Standard Ground Mounting System

Aluminum ground mount, optimized for lightweight, quick and efficient installation with flexible on engineering upon site conditions. Optional on foundation by ground screw or concrete. Maximize pre-assembled before shipment

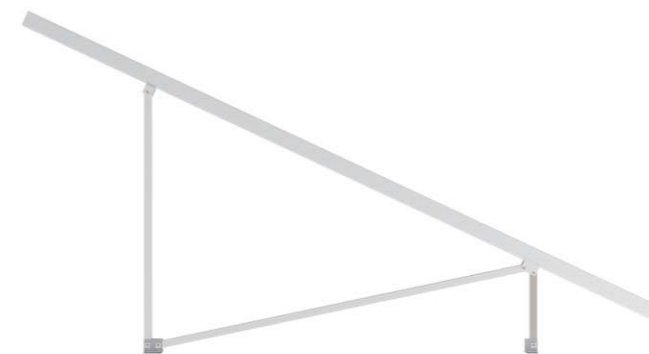
### Technical features:

Product name	Standard ground mounting system
Application	Flat concrete roof, open terrain
Inclination	Customized
Material	AL 6005-T5, SUS 304, Q235
Finish	AL 6005-T5 Anodized, Q235 Hot-dip galvanizing
Module orientation	Landscape or Portrait

## 1 Assembly



Ground mounting system has been maximized pre-assembly before shipment, which make the installation more convenient.



N-Type



W-Type

## 2 Assembly



Depending on the different design conditions, pre-assembly support is generally designed into the following two shapes:

The N-Type pre-assembly support is mainly used for the small wind & snow load condition projects.(2-4 columns)

The W-type pre-assembly support is mainly for the 4-5 columns wind & snow load condition projects. We will add cross support to make the structure stronger if the ground height is higher or wind & snow load is larger.

# Ground Mounting



## U Pile Ground Mounting System

Enerack U Pile Ground Mounting Systems suitable for large scale power station installation, Pile to the ground makes installation faster and lower cost than others. Each components are Maximize pre-assembled, widely save your labor cost and installation time. Customization allowed according to project wind & snow load, provide economic & effective solutions.

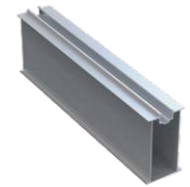


### 1 Assembly

ERK-GIC



ERK-R80



ERK-GEC



ERK-GRC



ERK-W50



### 2 Assembly

ERK-US-60



ERK-B105



ERK-GS



ERK-UBS



ERK-CH3-01



The U type Pile Ground Mounting System has been folded into a rectangular shape before shipment. Easy to transport.

#### Technical features:

Product name	U Pile ground mounting system
Application	Open terrain
Inclination	Customized
Material	AL 6005-T5, SUS 304, Q235
Finish	AL 6005-T5 Anodized, Q235 Hot-dip galvanizing
Module orientation	Landscape or Portrait

Penetration depth	Conventional U pile compression and tensile strength reference values (KN)							
	N=3		N=5		N=7		N=10	
	Resistance	Compression Resistance	Resistance	Compression Resistance	Resistance	Compression Resistance	Resistance	Compression Resistance
1500	9.5	11.5	15.7	19.3	21.9	27	31.13	38.6
1600	10.1	12.3	16.7	20.6	23.3	28.8	3.235	41.2
1700	10.8	13.1	17.8	21.8	24.8	30.6	.337.	43.7
1800	11.4	13.9	18.8	23.1	26.2	32.4	341.4	46.3
2000	12.6	15.4	20.8	25.7	29.1	36	45.65	51.5
2200	13.8	17	22.9	28.3	32	39.6	1.7	56.6
2500	15.7	19.3	26	32.1	36.3	45		64.3

Remarks: The N value of the soil in this table are based on the Swedish penetration test (SWS).



# Solar Fence System

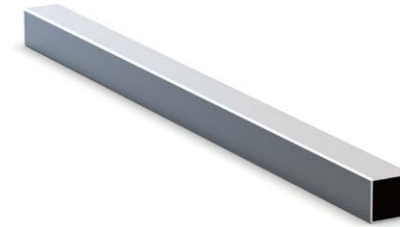


The Enerack Solar Fence System is an innovative solution in solar energy utilization and space optimization, designed to be flexible and adaptable to different installation requirements. The Solar Piling Foundation Fence Mounting System and the Solar Concrete Foundation Fence Mounting System are two installation methods that are easy to install. The column is made of hot-dip galvanized steel with a transverse aluminum rail to fix the long side of the solar panel. It is strong and durable, with good corrosion resistance and wind resistance. Its vertical modular structure can adapt to all kinds of fence forms and a variety of PV modules. By raising the height of PV panels, optimizing light reception and reducing ground shading, it can realize the utilization of three functions of land, power generation and fence, saving a lot of space and being more economical and efficient.

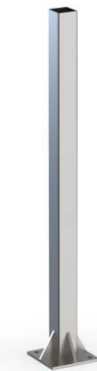
## Technical features:

Product name	Solar Fence System
Application	Family courtyard gardens, Open terrain
Tilt	90°
System material	AL6005-T5, Q235
Fastener material	SUS 304
Finish	AL 6005-T5 Anodized, Q235 Hot-dip galvanized
Module orientation	Landscape

## Assembly



ERK-PFP (Solar Piling Foundation Fence Mounting System)



ERK-CFP (Solar Concrete Foundation Fence Mounting System)



ERK-RWT-S



ERK-FRC

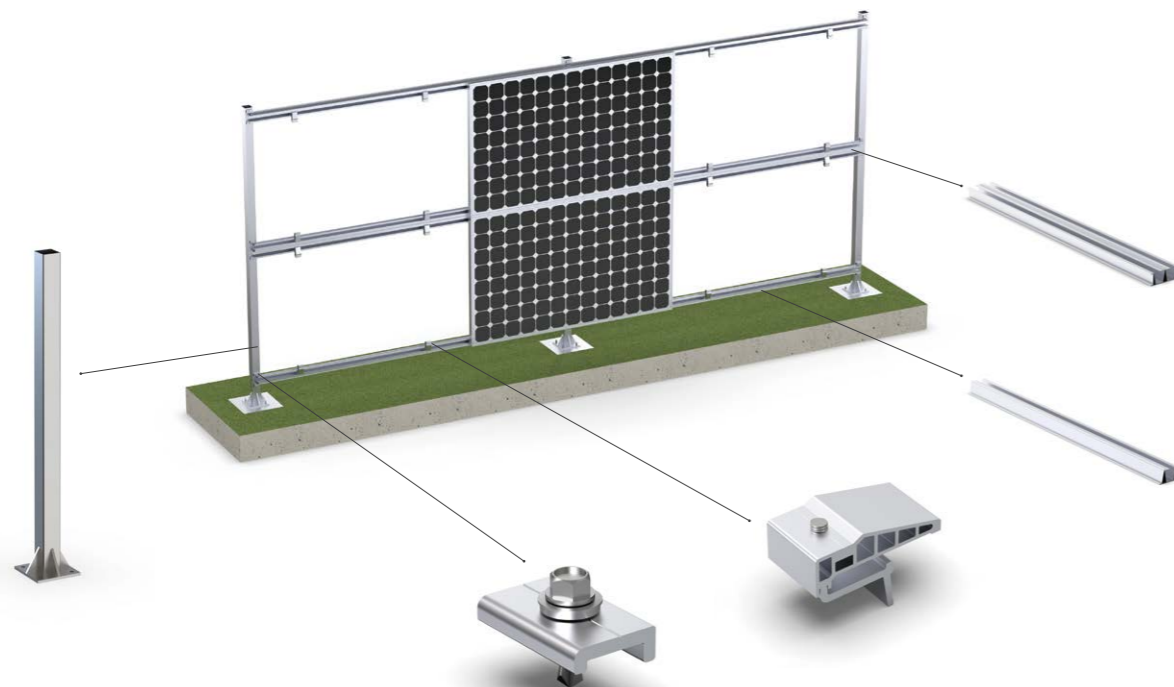


ERK-RWT



ERK-PVC

## Assembly

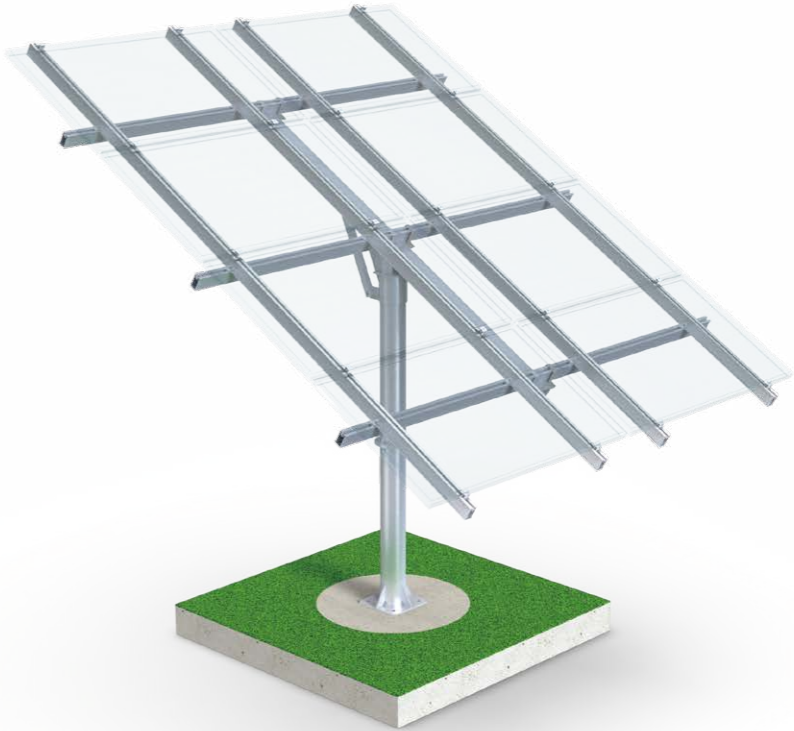


# Pole Mounting



Enerack pole mounting system have different angles options of 3, 4, 6, 8 panels. Simple design is ideal for remote off-grid applications such as water pumps for farm, or small residential and commercial systems etc. It can meet the customers need different angles and power generation. Packing in wooden cases each, easy to transport and install.

Technical features:	
Product name	Pole mounting system;
Application	Outdoor
Inclination	0-40°
Material	AL6005-T5, SUS304, Q235
Finish	AL 6005-T5 Anodized, Q235 Hot-dip galvanizin



**8 Panels Pole Mounting**



**3 Panels Pole Mounting**

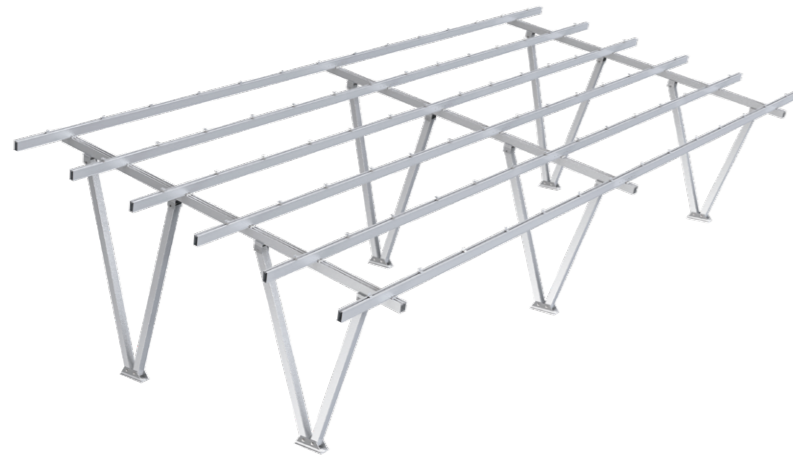


**4 Panels Pole Mounting**



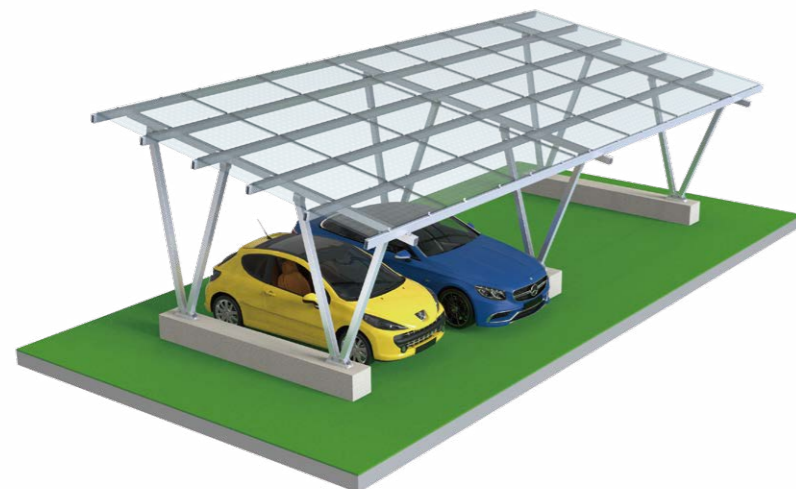
**6 Panels Pole Mounting**

# Carport Mounting



## Carport Mounting System

Enerack Carport Mounting Systems offers a simplified and economical solutions that provides a perfect combination of Shade parking and solar power generation as well as electric vehicle charging. It applied for family parking, commercial parking, awnings and even bus stops.



### 1 Assembly

- ERK-GIC 
- ERK-R125 
- ERK-GEC 
- ERK-GRC 
- ERK-CEC 
- ERK-W110 

### 2 Assembly

- ERK-B110 
- ERK-CPS 
- ERK-CPH-01 
- ERK-CPB-02 
- ERK-BEC 
- ERK-SFR-B110 



highly pre-assembled main structure for solar modules landscape or portrait 5°/8°/10°inclination or custom customized and engineered to project maximal span up to 5.4m cover up to 2 parking spaces per span.

Technical features:	
Product name	Carport mounting system
Application	Solar parking structure
Inclination	5°, 8°, 10° or customized
Material	AL 6005-T5, SUS 304
Finish	AL 6005-T5 Anodized
Module orientation	Landscape

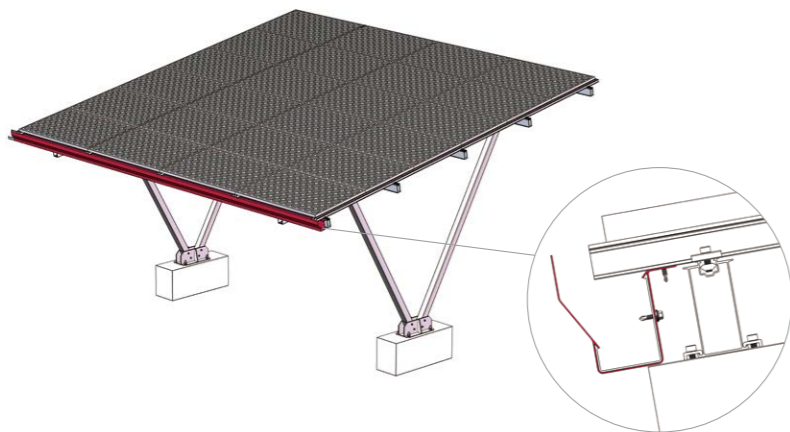
# Waterproof Carport System



Our carport systems are sold to Africa, the Middle East, Southeast Asia, Europe and the South America. The idle area of the parking shed is used to build a photovoltaic parking shed, and the combination of photovoltaic power generation and carport is the simplest one in the combination of photovoltaic and building. It can not only achieve all the functions of the traditional carport, but also bring electricity generation benefits to the owner. It is stored in the battery by the charging device or directly supplied to the electric vehicle to charge for self-use. You can even use extra power to get online. Using aluminum alloy structure bracket, simple installation, generous, fashionable, elegant.

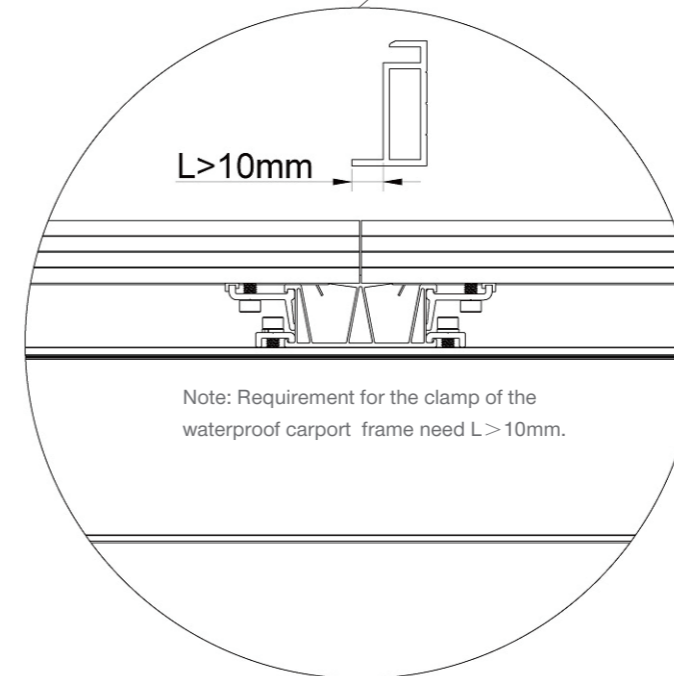
## Product Overview:

Install Site	Flat outdoor
Material	AL6005-T5, SUS304
Standards	AS/NZ1170.2、JIS C 8955、MCS 012、TUV、UL2703 etc
Tilt Angle	5°, 8°, 10° or customized



## 1 Assembly

- ERK-R125
- ERK-CPS
- ERK-B110
- ERK-CPH-01
- ERK-CPS-02
- ERK-GRC
- ERK-PVC
- ERK-CEC



### Features:

1. Good heat absorption.
2. Good waterproof and rain protection, convenient installation, and flexibility.
3. Make full use of the original site to provide green energy.
4. Suitable for frame panel: Poly modules, double glass module etc.

**Installation place:** home, company, shopping mall, large parking lot.

**Parking category:** battery car/bicycle, car, bus.

**Number of parking Spaces:** 1 parking space, 2 parking Spaces, 3 parking Spaces, multiple parking Spaces (large span).

**By row:** single row parking space, double row parking space.

## 2 Assembly

- ERK-HWT
- ERK-RWT
- ERK-RWC
- ERK-SFR-07
- ERK-SFR-B110
- ERK-CGR
- ERK-BEC



Xiamen Enerack Technology Co., Ltd.

Tel: +86 - 592-5669285

Mail: [info@enerack.com](mailto:info@enerack.com)

Fax: +86 - 592-5669235

web: [www.enerack.com](http://www.enerack.com)

Add: 806-1, No. 12-3, Huasheng Road, Huli District, Xiamen, China

Product Catalog Solar Mounting Solutions



WhatsApp



Web



ISO 9001: 2015 quality management system certified